

Technical specifications version 4.0

This document contains the most common information technicians would like to know about our venue. If you got any additional inquiries, do not hesitate to contact us.

The technical staff is looking forward to welcome you to our venue.

Preproduction contact

We will do our best to contact you minimum 7 days prior to the show date, if you need to talk to us earlier contact our preproduction manager Steen Andersen.

Steen Andersen

Cell: +4551238128

Mail: sta@horsens.dk

General information

KulisseLageret is a small venue with a maximum capacity of 150 people.

Load-in address & Parking

KulisseLageret has only parking facilities for two vehicles at the load-in dock - if you are traveling with more please let us know in advance. Also, if you are traveling with a vehicle longer than 8 meters please advise us.

Load-in dock address:

Teatertorvet
8700 Horsens
Denmark
Gps: lat: 55.86284909858343 long: 9.847142290213014

Soundcheck

KulisseLageret's stage is located in the basement under Horsens Ny Teater's main stage, therefore soundcheck time slots can variate up to 20 minutes from the time slot announced in advance, depending on the soundcheck upstairs. It is however very unusual that this happens.

Backstage

The backstage room is located in the building next to the venue. The backstage room will be accessible from load-in until 1 hour after load-out.

Facilities (One large room with):

1x Tables and chairs for 15 people	1x Full size mirror
3x Sofas for 3 people	1x Plenty of DK socket power outlets
1x TV	
2x Toilets	
1x Small kitchen with dishwasher	

If you would like to use our bathing, facilities please let us know in advance.

Show

As KulisseLageret's stage is located in the basement under Horsens Ny Teater's main stage, show times can variate up to 30 minutes from the show time announced in advance, depending on the show upstairs. It is however very unlikely that this happens, but if it does, we hope you will understand.

Load-out

We prefer that you load-out about 10-15 minutes after the show has ended.

Policies

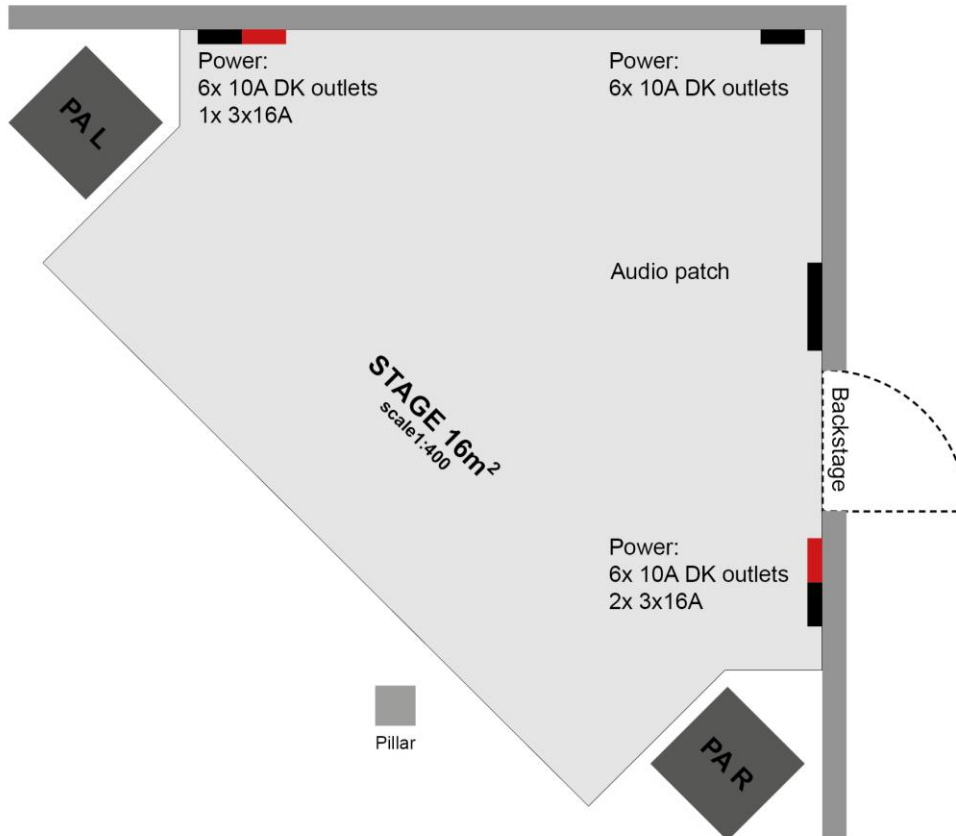
Sound Limit: 103 dbA LEQ over 15 minutes. We provide a 10 EaZy measurement system.

Smoking: According to Danish law, it is illegal to smoke indoors. We have a few outdoors smoking areas; our staff can help you find them.

Stage

The stage at KulisseLageret is quite small, but it gives you an opportunity to stand face to face with your audience. We are well aware that the stage makes it unpractical and difficult to load-in some touring productions, but we will do our best to help you get a nice show up and running.

Stage drawing



Stage dimensions (width x depth x height): 4m x 4m x 0,25m
 Stage floor to stage ceiling height: 2,4m

Stage barriers

It is not possible to request stage barriers at the venue; we can however provide one or two guards in order to secure the stage.

Stage power

3x	3x10A DK-socket power outlets
2x	3x16A CEE power outlets

Sound

We provide the following sound equipment:

PA system (total):

4x db C6 tops
4x db C4 subs
1x Lab Gruppen PLM 14k22 amplifier

Delay:

4x db 5S
1x Lab Gruppen D10:4 amplifier

Monitor system (4 sends):

5x db M4 monitors
1x Lab Gruppen PLM 14k22 amplifier

FOH:

1x Allen & Heath C3500 with dante card
1x 10 EaZy measurement system

Microphones:

2x Shure B52
1x Shure B91A
1x AKG D112
6x Shure SM57
4x Shure SM58
6x Shure B58a
6x Sennheiser e604
2x Sennheiser e606
1x Audix D2
2x Røde NT-5
2x AKG C451 B
2x AKG C3000 B

Line Drivers:

12x LD DI
2x SD 8401
1x Countryman Type 85

Wireless microphones:

4x Sennheiser EW100 with handheld mics

Stands:

10x High stands
8x Low stands
2x Upright stands
4x Note stands

Backline – Piano:

1x YAMAHA Grand Piano CP-80
1x YAMAHA P-150
1x Roland RD-100
2x Sustain pedal
1x Piano bench

Backline – Guitar:

1x Guitar combo: Fender blues delux
1x Guitar combo: Vox AC30cc2
1x Guitar combo: Roland BC 30 Blues cube
1x Guitar combo: Orange Crush 35LDX

Backline – Bass:

1x Bass combo: Hartke Kickback
1x Bass amp: Galien-Krueger MAG 600H EVOII
1x Bass Cab: Galien-Krueger 210 MBE

Backline - Drums

1x Drumkit: Tama superstar
1x Bassdrum: 22", Evans EMAD, Pedal: TAMA iron cobra
1x Snare: TAMA Silver star limited edition 14", REMO Ambassador coated
1x Hi-hat: Sabian B8-plus 14"
1x Tom 10" REMO Ambassador coated
1x Tom 12" REMO Ambassador coated
1x Floor tom 14" REMO Ambassador coated
1x Floor tom 16" REMO Ambassador coated

ATTENTION: IF YOU NEED BACKLINE, LET US KNOW IN ADVANCE.

MULTICORE

KulisseLageret uses an analogue multicore running 32 inputs to FOH and 12 returns to stage. In addition we got 4x CAT5e UTP between Stage and FOH. If you want to use another kind of multicore, you will have to bring your own.

FOH

Front of house is located in the middle of the bar (185mm x 90mm). Please be aware that the bar staff is working around you. If you bring your own desk and multicore, please let us in advance.

Light

We provide the following light equipment:

Desk: Chamsys MagicQ mini wing + PC with touchscreen

Universes: 4 (2x 3-pin DMX, 2x 5-pin DMX)

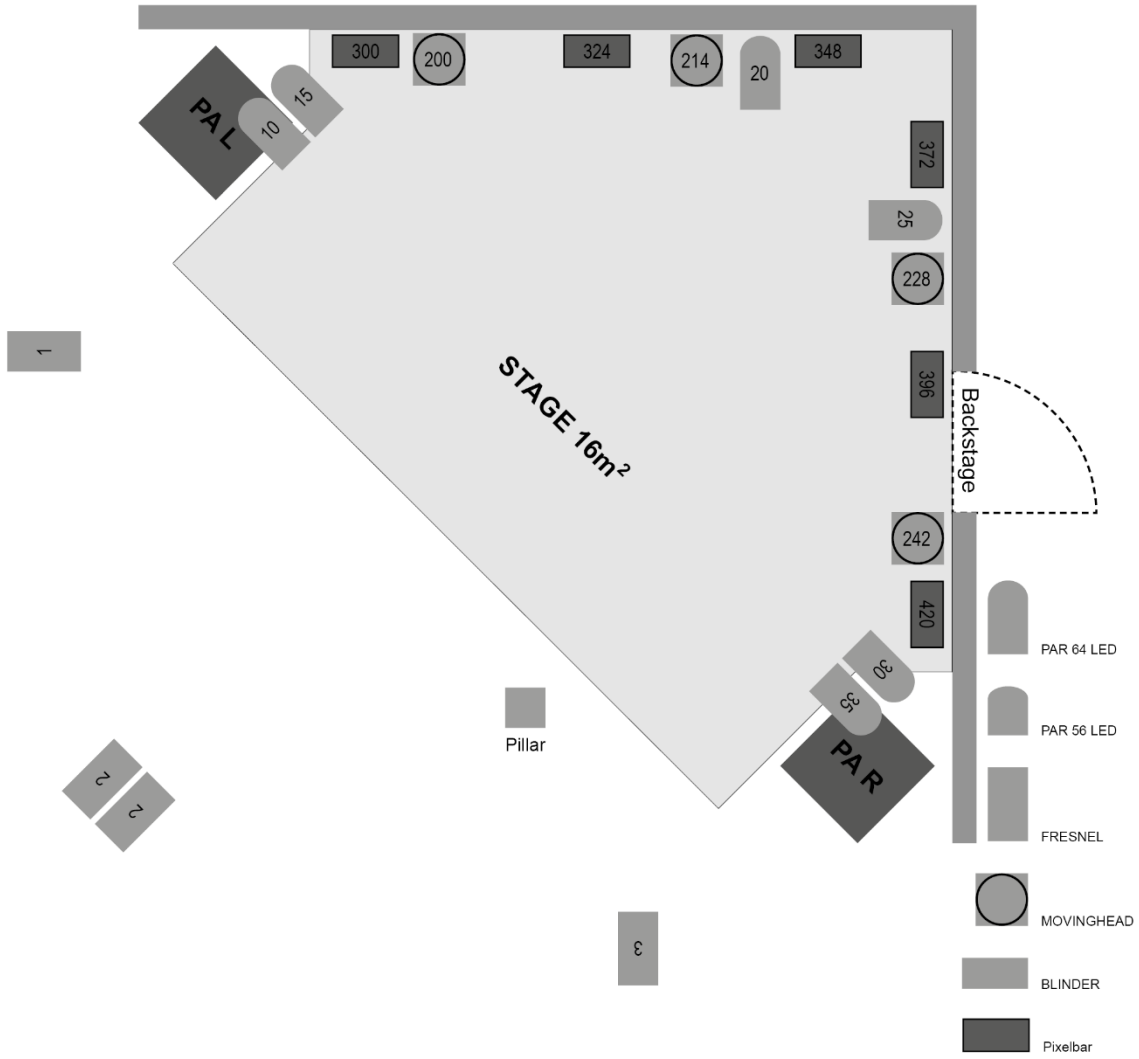
Splitter: 1x LSC 1to5 (Houselights)

DMX	Fixture	Mode
1-001	Dimmer, LSC redback1: Front left	1
1-002	Dimmer, LSC redback1: Front center	1
1-003	Dimmer, LSC redback1: Front right	1
1-004	Dimmer, LSC redback1: Smoke FAN	1
1-005	Dimmer, LSC redback1: Blinder	1
1-006	Dimmer, LSC redback1: Blinder	1
1-010	Stairville CX-3 LED PAR	4
1-015	Stairville CX-3 LED PAR	4
1-020	Stairville CX-3 LED PAR	4
1-025	Stairville CX-3 LED PAR	4
1-030	Stairville CX-3 LED PAR	4
1-035	Stairville CX-3 LED PAR	4
1-200	Stairville Movinghead Wash MH-110	14
1-214	Stairville Movinghead Wash MH-110	14
1-228	Stairville Movinghead Wash MH-110	14
1-242	Stairville Movinghead Wash MH-110	14
1-300	Stairville LED Pixelbar 240/8 RGB	24
1-324	Stairville LED Pixelbar 240/8 RGB	24
1-348	Stairville LED Pixelbar 240/8 RGB	24
1-372	Stairville LED Pixelbar 240/8 RGB	24
1-396	Stairville LED Pixelbar 240/8 RGB	24
1-420	Stairville LED Pixelbar 240/8 RGB	24
1-500	Smoke: Stairville Hz-200 compact hazer	2

ATTENTION: BRING FLOOR PRODUCTIONS ONLY

At our venue, there is no room for rigging lights in the ceiling. You are welcome to use our house lights, and then bring your own floor production. However, there is not much room on the stage, so try to decrease your footprint as much as possible.

Light plot



AV & Specials

Projector: Epson EB-W29 (3000 lumen)

Screen: 2860mm x 1700mm

Confetti: We like confetti, but it takes a lot of time to clean up. Please let us know in advance if you expect to use confetti.

Pyrotechnics: If your production would like to use of pyrotechnics at your show, this has to be cleared with the local fire department at least 4 weeks prior to the show. According to Danish law, the permission to use pyrotechnics has to be applied for by the head of pyrotechnics from your production, and not by the venue. Contact our preproduction manager to achieve contact information to the local fire department.

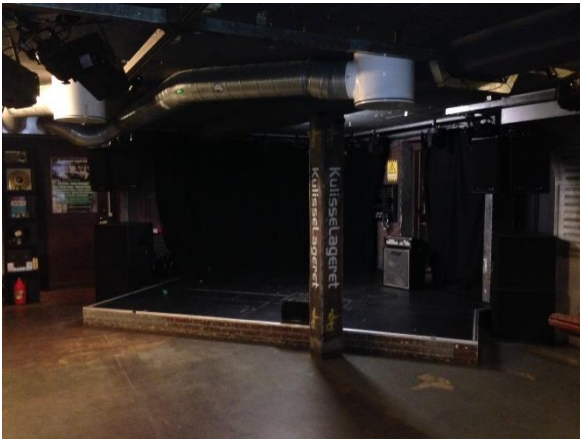
Pictures



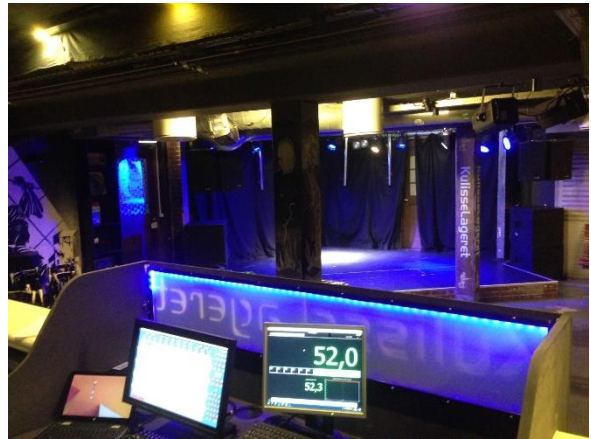
Backstage lounge



Backstage lounge



The Stage



View from FOH to stage



Load-in dock



FOH